

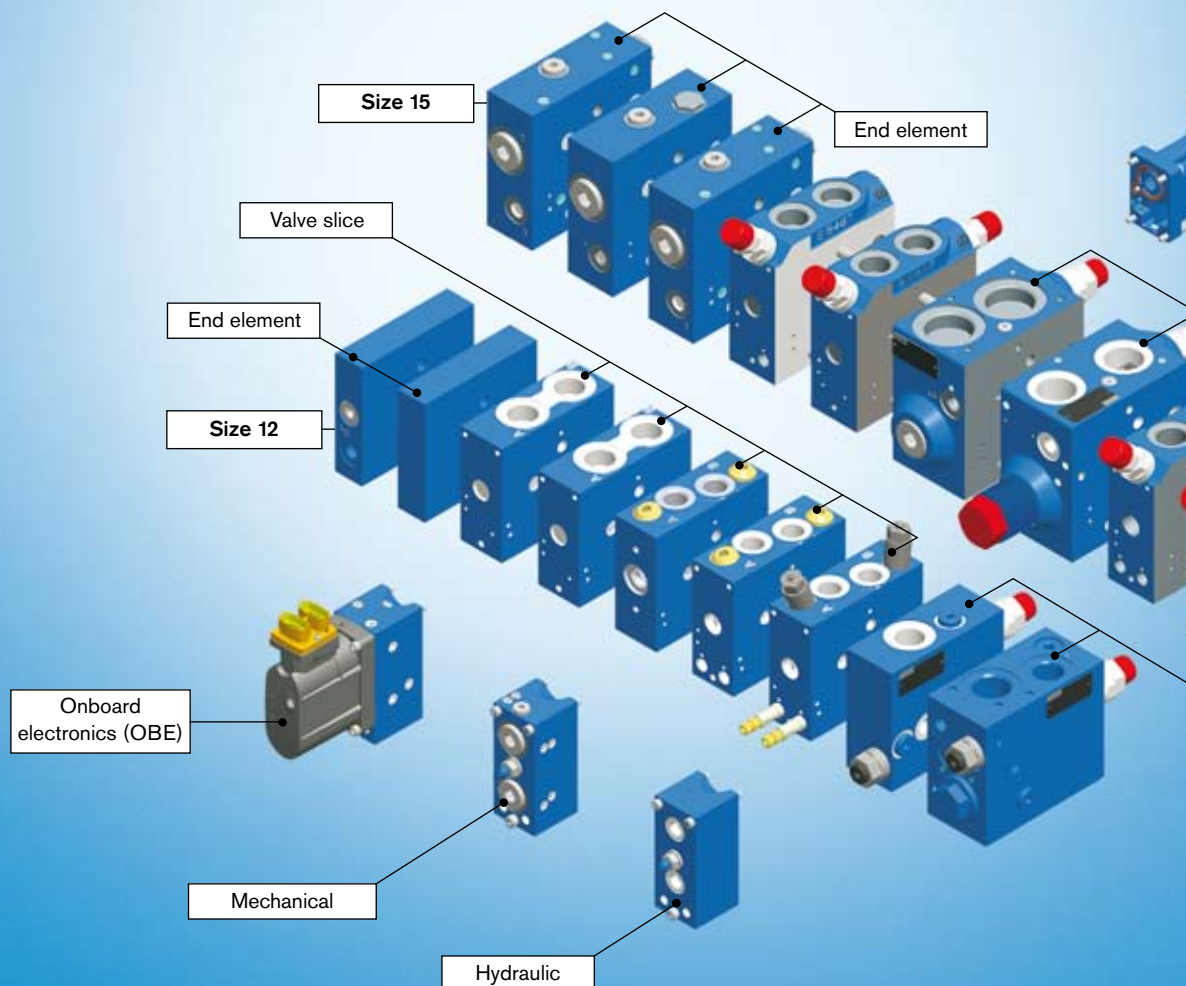
Load-Sensing M4 Control Block: The Flexible Multi-Talent for Maritime Applications

The Drive & Control Company



Load-Sensing M4 Control Block: The Multi-Talent for Highest Standards

Thanks to their modular and compact construction, Rexroth M4 control blocks are used in the most diverse applications. They can be used to control travel drives in open circuits as well as for precision and stable control of work movements. The M4 valve block is giving you furthermore the option of actuating single consumers proportionally and with high sensitivity. And this can be done mechanically or hydraulically depending on requirements. The M4 module is so flexibly constructed that all types of actuation are possible individually or combined. Beside other applications, the control block M4 is used in the new Rexroth-winch control block.



Size: control block M4-12

Max. nominal flow 140 l/min

Operating pressure up to 420 bar

Size: control block M4-15

Max. nominal flow 200 l/min

Operating pressure up to 420 bar

Special features of the M4 modular design:

The flexible, extendable module solution in a modular construction with integrated electronics is offering unique combinations and options:

Types of actuation:

- Mechanical with manual lever
- Hydraulic
- Electrohydraulic with OBE

End elements:

- With LS load reduction
- With separate P, T, LS port

Input elements:

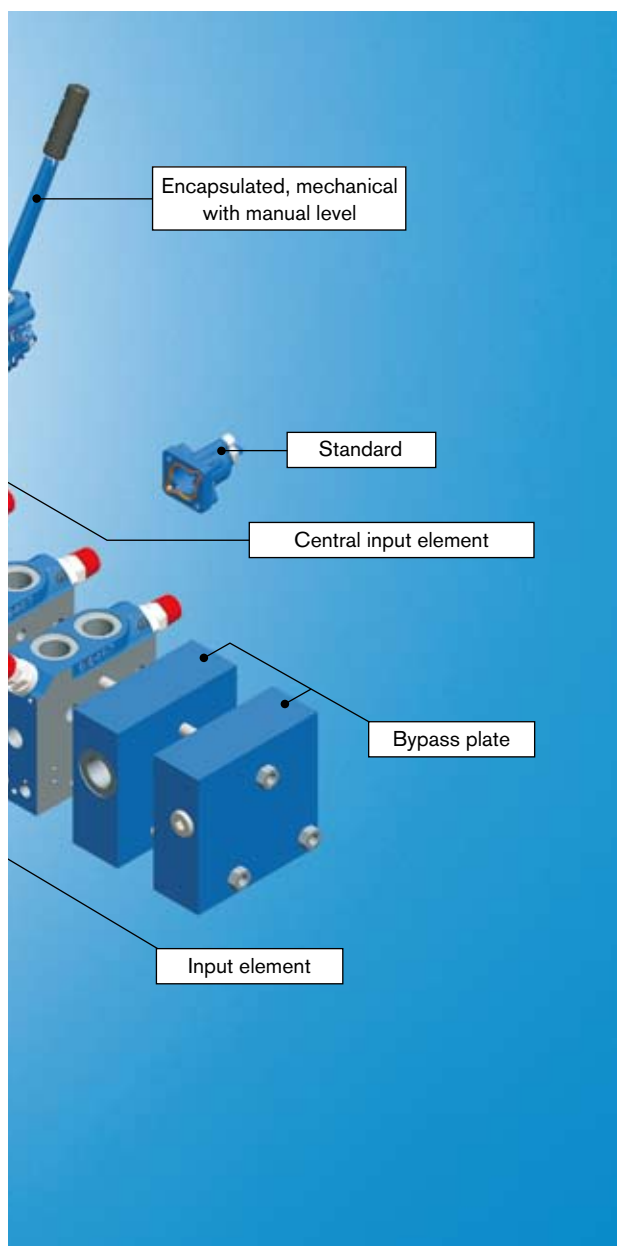
- Central input for variable pumps
- Closed center with priority function for variable pumps
- Open center for fixed pumps

Shock/Boost valves:

- Adjustable
- Permanently set

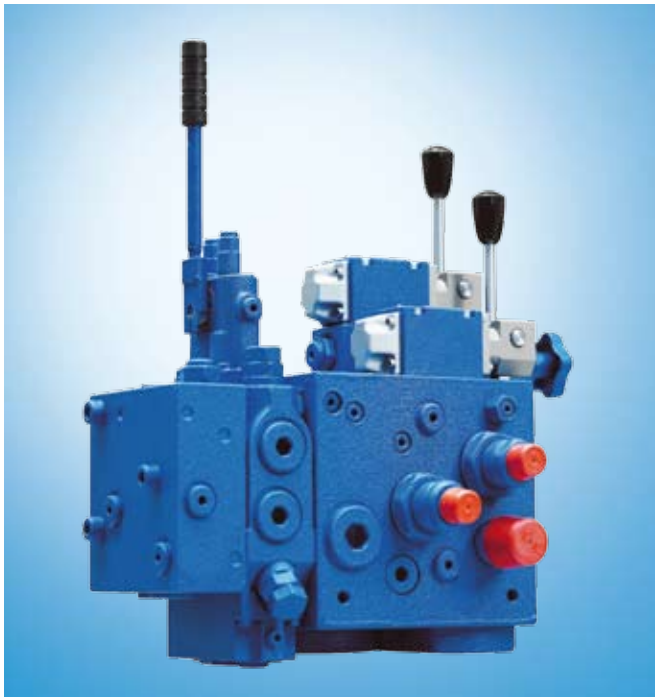
LS pressure limitation

- Mechanically set



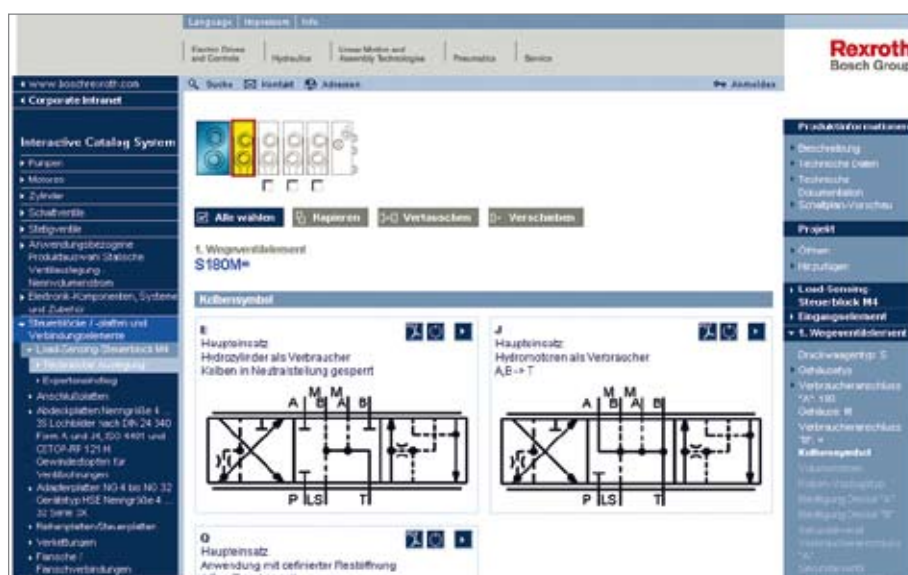
Overview of Rexroth M4 control blocks benefits and advantages:

Same actuation modules for sizes M4-12 and M4-15	▶	Reduction in spare parts expenditure
Integration of compact hydraulic system components	▶	Reduced pipework expenditure and more compact construction
Coated valve slices and actuator covers	▶	Long service life and reliable use
Stainless handlever	▶	Long maintenance periods
Triple special painting	▶	Long maintenance periods
Coated inlet elements for fixed and variable displacement pumps	▶	Operation possible on various pump types
Various diagnostics functions for OBE monitoring	▶	Immediate display of malfunction
Analog input on the OBE	▶	Flow rate control possible with analog and digital signal
Availability of different CAN bus protocols	▶	Easy adaptation to existing conditions and operational situations



The M4 Configurator at www.boschrexroth.com/M4-configurator

The modular assembly of the Rexroth M4 control blocks in a sandwich design is allowing a flexible and easy configuration. The interactive M4 configurator is designing your individual control block for the M4-12 or M4-15 series within a few minutes. The direct access on 3D-models, hydraulic circuit diagrams and installation drawings is saving valuable development time.



The configurator is generating the following documents:

- Hydraulic circuit diagrams
- Installation drawings
- 3D installation models (Standard program M4)

Further information on the:

- M4-12 control block
Technical data sheet RE 64276
- M4-15 control block
Technical data sheet RE 64283



Bosch Rexroth AG
Hydraulics
Glockeraustrasse 4
89275 Elchingen, Germany
Phone +49 7308 82-0
Fax +49 7308 72-74
info.brm@boschrexroth.de
www.boschrexroth.com/brm